

BEWARE OF ROCK PILES

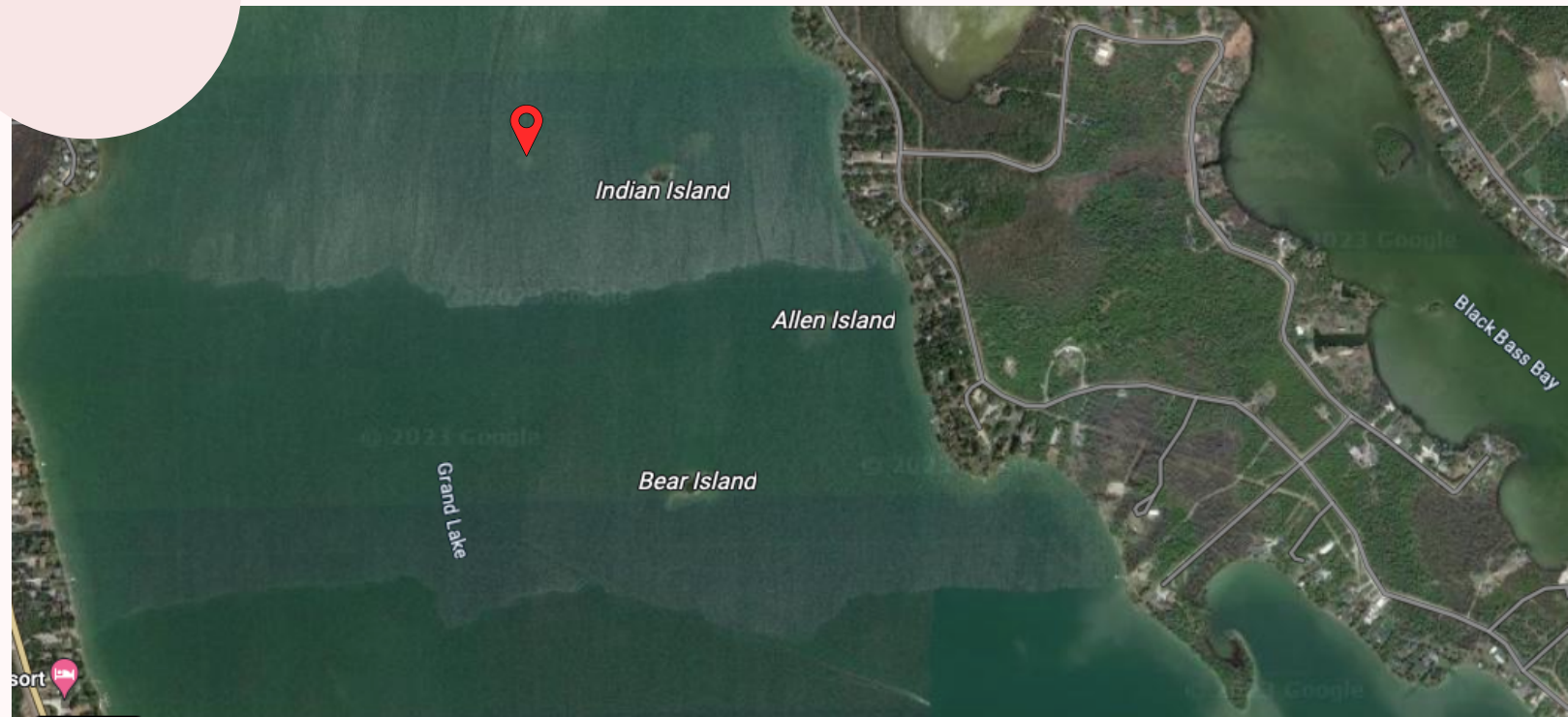


****Empowering Safer Navigation on Grand Lake****

We recognize the danger posed by submerged rock piles on Grand Lake, especially during dry seasons and periods of low water clarity. To assist new boaters on Grand Lake and remind those who have been boating Grand Lake for years. Here is a list of some of the rock piles that can sneak up on you.

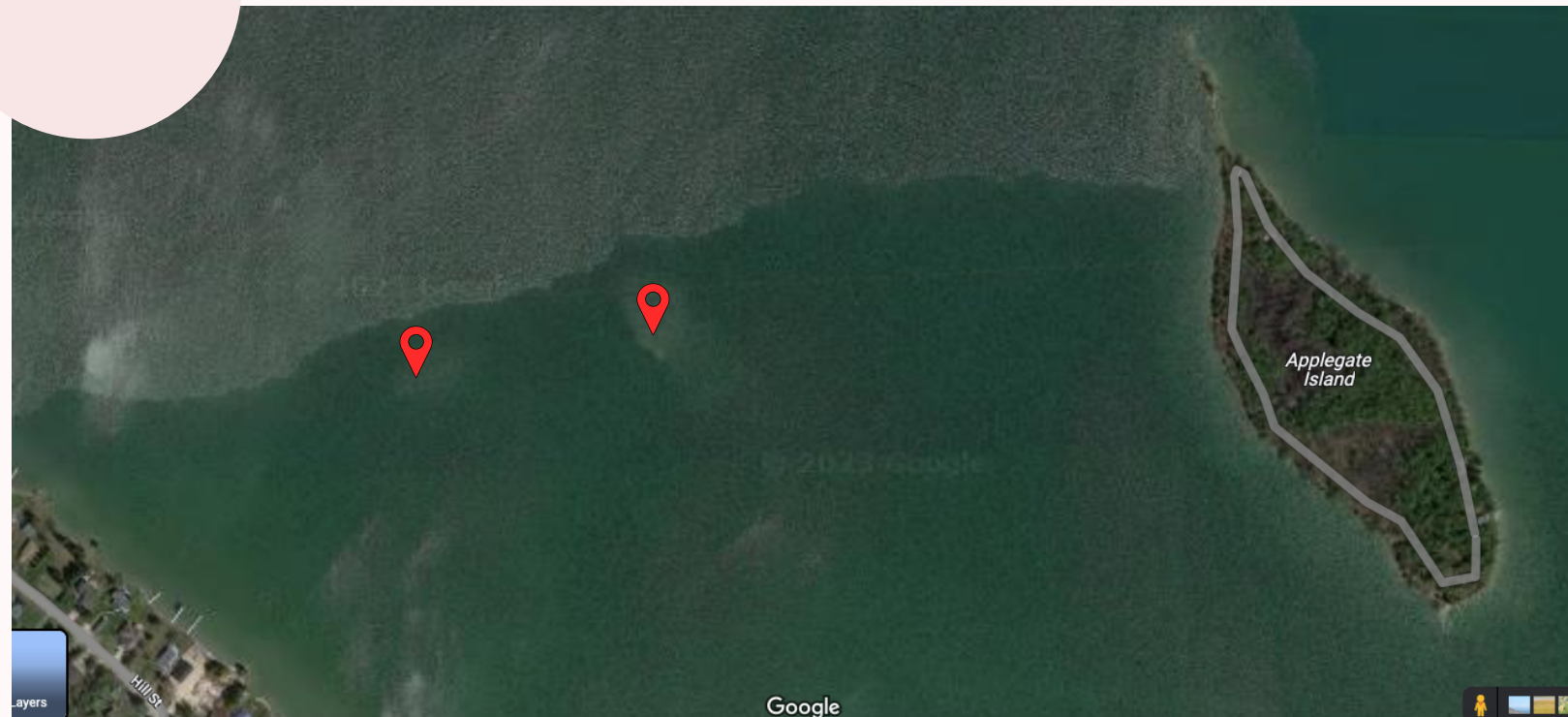
While we acknowledge the impossibility of identifying every potential hazard in a rock bottom lake, our focus is on identifying high-risk areas away from shorelines and islands.

BEWARE OF ROCK PILES



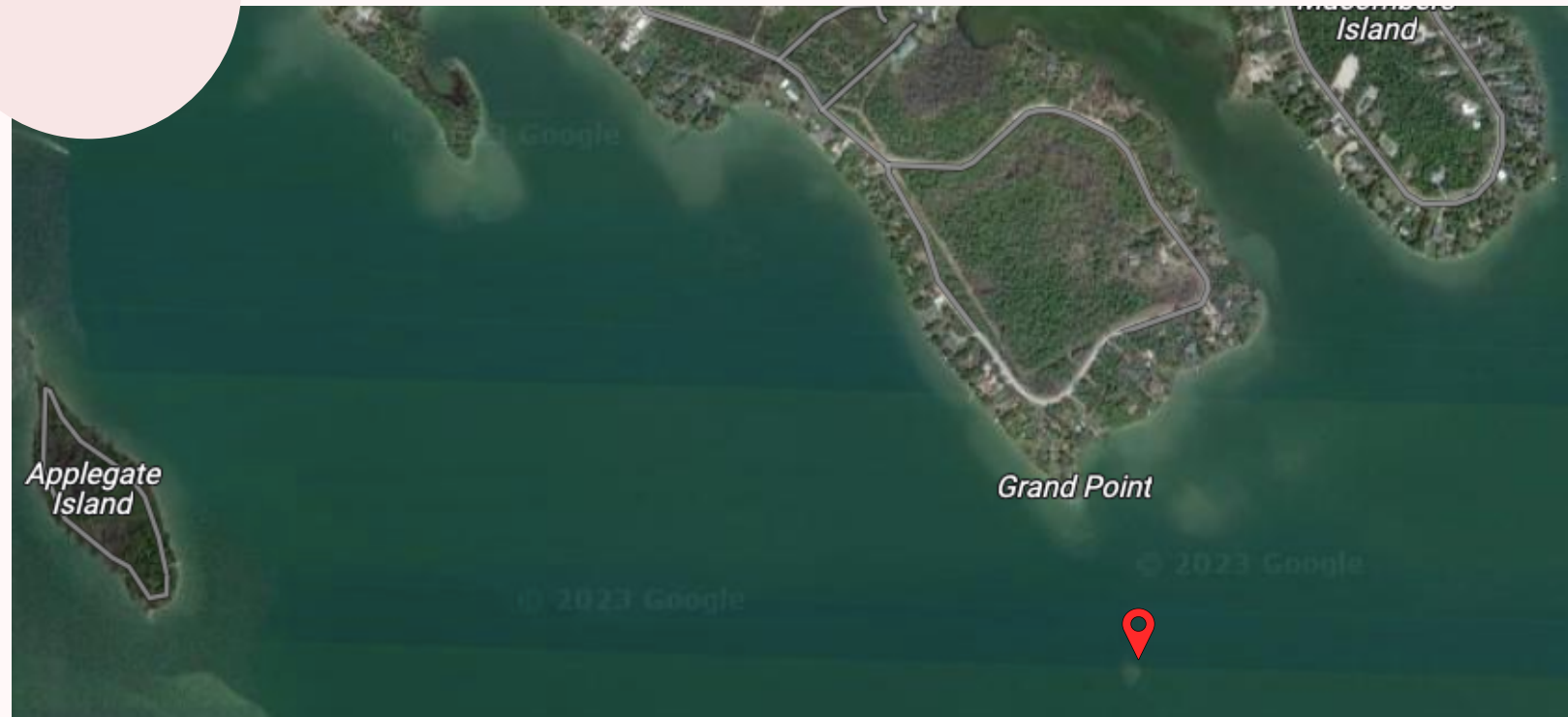
Rock pile just east of Indian Island on north end of Grand Lake

BEWARE OF ROCK PILES



Two rock piles west of Applegate Island. These two area had reeds growing in previous years which provided a way to avoid them but the reeds have not been coming back for at least 3 years now.

BEWARE OF ROCK PILES



The rock pile south of Grand Point.

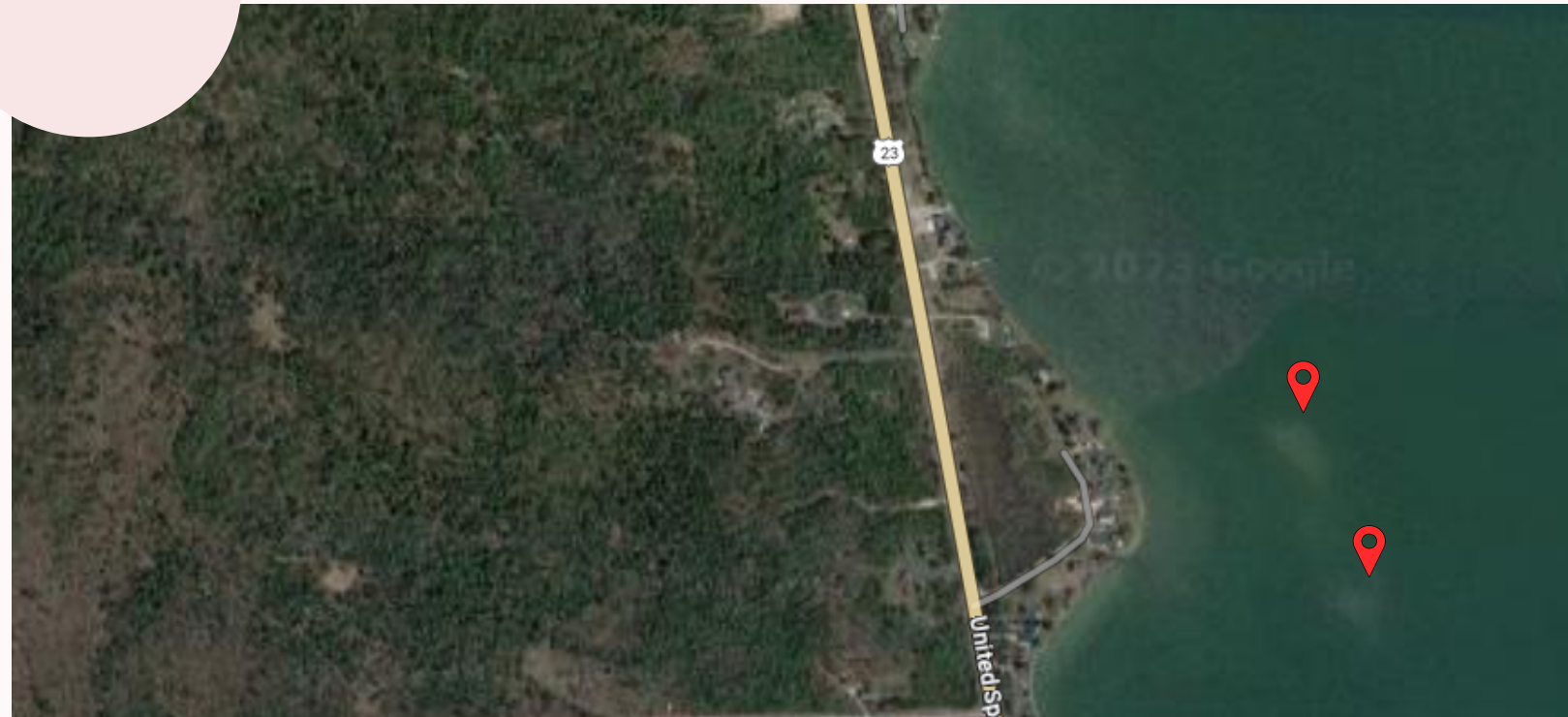


BEWARE OF ROCK PILES



The rock pile called Sunken Island east of Grand Island and northwest of the line of islands from Round Island to Tanglewood Island.

BEWARE OF ROCK PILES



The rock piles east of Rosemary Lane.